



INSTALLATION GUIDE

V7R1

Table of Contents

Choosing your installation method	3
Method A.....	5
Automated install from a PC	5
Summary.....	5
Prerequisites	5
Downloads	5
Instructions.....	7
Method B.....	17
Automated install from a PC and the IBM i.....	17
Summary.....	17
Prerequisites	17
Downloads	17
Instructions.....	17
Method C.....	27
Manual installation of the installer, automated installation from the IBM i.....	27
Summary.....	27
Prerequisites	27
Downloads	27
Instructions.....	27
Method D.....	30
Manual installation on the IBM i.....	30
Summary.....	30
Prerequisites	30
Downloads	30
Instructions.....	31

[Choosing your installation method](#)

There are several ways in which CoolSpools V7R1M0 can be installed. Which method is best for you depends on a number of factors. Choose your preferred method from the list below and click on the link to follow the instructions for that method.

Method	Overview	Description	Prerequisites
A	Automated install from a PC	<p>This method involves running a .EXE file (self-extracting zip) file on your PC to install CoolSpools on your IBM i.</p> <p>Depending on which .EXE program you run, you can either install the entire CoolSpools package or individual product options.</p> <p>The PC installer will send the code to be installed to the IBM i and run the commands needed to install CoolSpools there.</p> <p>Note that CoolSpools does not need a PC and after installation all CoolSpools functionality runs entirely on the IBM i.</p> <p>Select this method if you are more comfortable running things from a PC.</p>	<ul style="list-style-type: none"> a) You must sign on to the IBM i as a user with *SECADM and *ALLOBJ special authorities. b) Either an FTP (preferred) or IBM i Access connection to the IBM i from your PC. c) You must be willing and able to open up your PC firewall so the installer can communicate between your PC and the IBM i.
B	Automated install from a PC and the IBM i	<p>This method involves running a .EXE file (self-extracting zip) file on your PC to install just a small installer application on the IBM i.</p> <p>The rest of the installation, including downloading of the install files, is then carried out on the IBM i itself.</p> <p>Note that CoolSpools does not need a PC and after installation all CoolSpools functionality runs entirely on the IBM i.</p> <p>Select this method if you prefer to run things mostly from the IBM i.</p>	<ul style="list-style-type: none"> a) You must sign on to the IBM i as a user with *SECADM and *ALLOBJ special authorities. b) Either an FTP (preferred) or IBM i Access connection to the IBM i from your PC. c) You must be willing and able to open up your PC firewall so the installer can communicate between your PC and the IBM i. d) An internet connection must be available for use from the IBM i so

			that the installer can connect to ariadne's web server via FTP to download the install files.
<u>C</u>	Manual installation of the installer, automated installation from the IBM i	<p>Select this method if you cannot use the PC install programs used by methods A and B above, for example if you cannot open up your PC firewall to all the installer to connect to the IBM i.</p> <p>You will manually install the small installer application on the IBM i then run an automated install of the rest of the application from the IBM i itself.</p>	<p>a) You must sign on to the IBM i as a user with *SECADM and *ALLOBJ special authorities.</p> <p>b) An FTP connection from your PC to the IBM i to allow transfer of the save files for the small installer application.</p>
<u>D</u>	Manual installation mainly on the IBM i	<p>Select this method only if it is not possible to use any of the above methods for some reason, as it is more complex than the others.</p> <p>You are required to download one or more zip files each containing one or more IBM i save files, Those save files must be unzipped and transferred to the IBM i. You must then run a series of Restore Licensed Program (RSTLICPGM) commands to install the product options you want.</p>	<p>a) You must sign on to the IBM i as a user with *SECADM and *ALLOBJ special authorities.</p> <p>b) An FTP connection from your PC to the IBM i to allow transfer of the save files.</p>

Method A

Automated install from a PC

Summary

This method involves running a program on your PC to install the entire CoolSpools package or individual product options on your IBM i.

Depending on which program you run, you can either install the entire CoolSpools package or individual product options.

The PC installer will send the code to be installed to the IBM i from your PC and run the commands needed to install CoolSpools there.

Note that CoolSpools does not need a PC and after installation all CoolSpools functionality runs entirely on the IBM i.

Select this method if you are more comfortable running things from a PC.

Prerequisites

- a) You must sign on to the IBM i as a user with *SECADM and *ALLOBJ special authorities.
- b) Either an FTP (preferred) or IBM i Access connection to the IBM i from your PC must be available.
- c) You must be willing and able to open up your PC firewall so the installer can communicate between your PC and the IBM i.

Downloads

In order to install CoolSpools using this method, you must first download and run the appropriate .EXE file from the list below.

All files can be downloaded from <https://www.coolspools.com>

Product Option	Option Name	.EXE file name
All options	Complete Package	CoolSpools_V7R1_AllOptionsSetup.EXE
Installs the complete CoolSpools package on your IBM i. No other CoolSpools setup is required once this program has completed.		

Product Option	Option Name	.EXE file name
*BASE	Base Option	CoolSpools_V7R1_BaseSetup.EXE
Installs just the CoolSpools Base option on your IBM i. The Base option must be installed before any of the other product options below can be installed.		

Once this program has completed, you must install the individual options that you wish to use by running one or more of the programs listed below.

Product Option	Option Name	.EXE file name
1	Spool Converter	CoolSpools_V7R1_SpoolConverterSetup.EXE
<p>Installs just the CoolSpools Spool Converter option on your IBM i.</p> <p>CoolSpools Spool Converter lets you convert IBM i spooled files to PDF, Excel and other formats.</p> <p>The Base option must be installed before you can install other options.</p>		

Product Option	Option Name	.EXE file name
2	Email	CoolSpools_V7R1_EmailSetup.EXE
<p>Installs just the CoolSpools Email option on your IBM i.</p> <p>CoolSpools Email lets you send emails from your IBM i and attach files that CoolSpools creates.</p> <p>The Base option must be installed before you can install other options.</p>		

Product Option	Option Name	.EXE file name
3	Spool Admin	CoolSpools_V7R1_SpoolAdminSetup.EXE
<p>Installs just the CoolSpools Spool Admin option on your IBM i.</p> <p>CoolSpools Spool Admin lets you manage spooled files on your IBM i and automate the conversion, processing and distribution of spooled files as PDFs, Excel etc.</p> <p>The Base option must be installed before you can install other options.</p>		

Product Option	Option Name	.EXE file name
4	Database	CoolSpools_V7R1_DatabaseSetup.EXE

Installs just the CoolSpools Database option on your IBM i.

CoolSpools Database lets you extract information from on your IBM i database and publish it as Excel spreadsheets, XML, CSVs, text, HTML etc. Query and SQL output can also be saved in these formats.

The Base option must be installed before you can install other options.

Product Option	Option Name	.EXE file name
5	NetServer Toolkit	CoolSpools_V7R1_NetServerToolkitSetup.EXE

Installs just the CoolSpools NetServer Toolkit option on your IBM i.

CoolSpools NetServer Toolkit is a free component of the CoolSpools suite which provides a quick and easy way of creating and managing NetServer file and print shares. NetServer file shares are a great way of accessing PDFs, Excel spreadsheets and other files created by CoolSpools from your PC.

The Base option must be installed before you can install other options.

Instructions

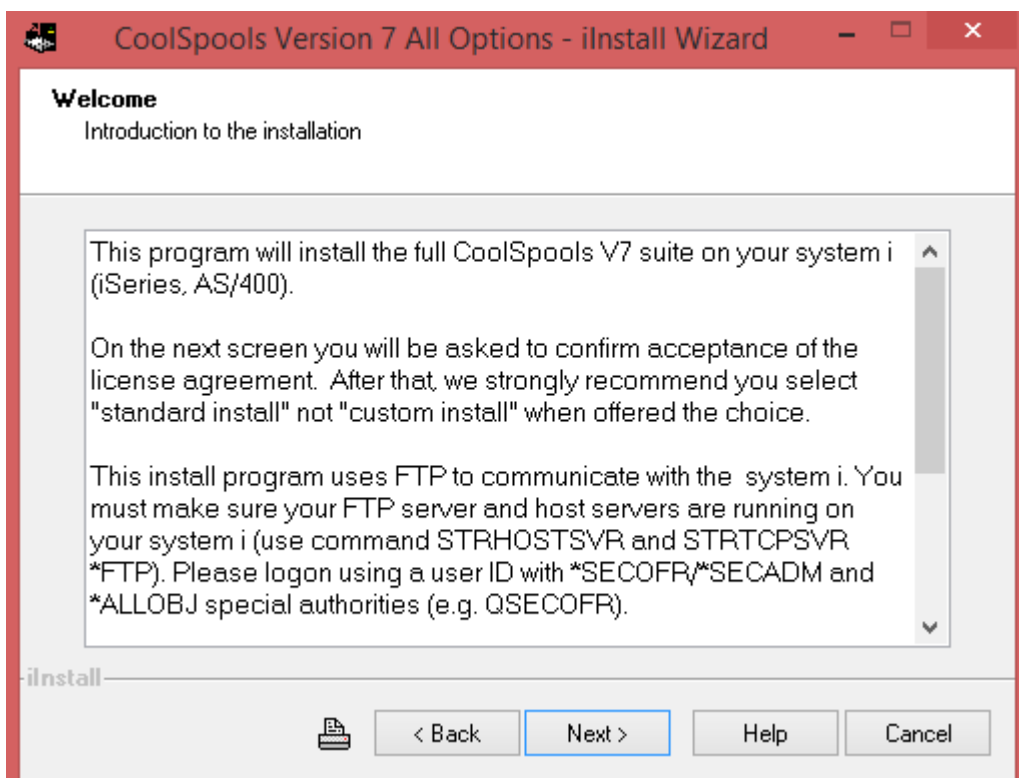
When you download any of the files above, you will be given the option to run it or save it to your PC. Select Run to start the install process immediately. Select Save to store the installation program on your PC. If you choose save to it to your PC, in order to run it at a later time, locate it on your PC (using Computer, My Computer or Explorer) and double click it to start the installation process.

You will first see this welcome screen or something very similar:



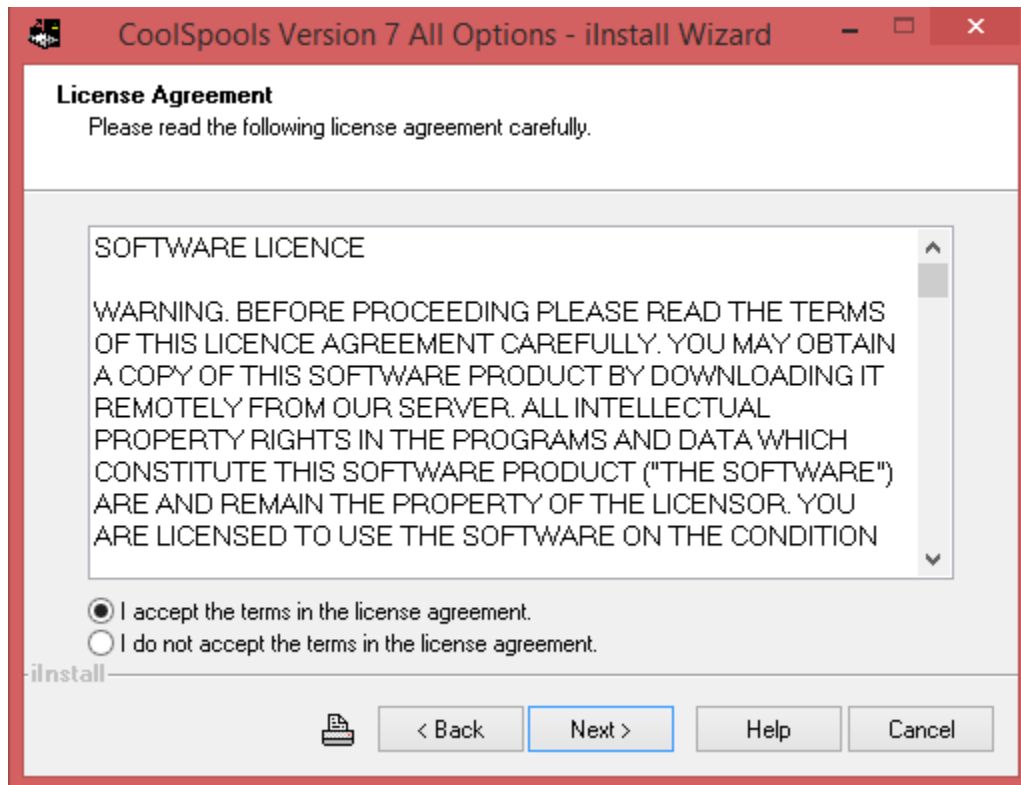
Click Next.

The following screen explains what part of the software is being installed and reminds you of the instructions explained below.



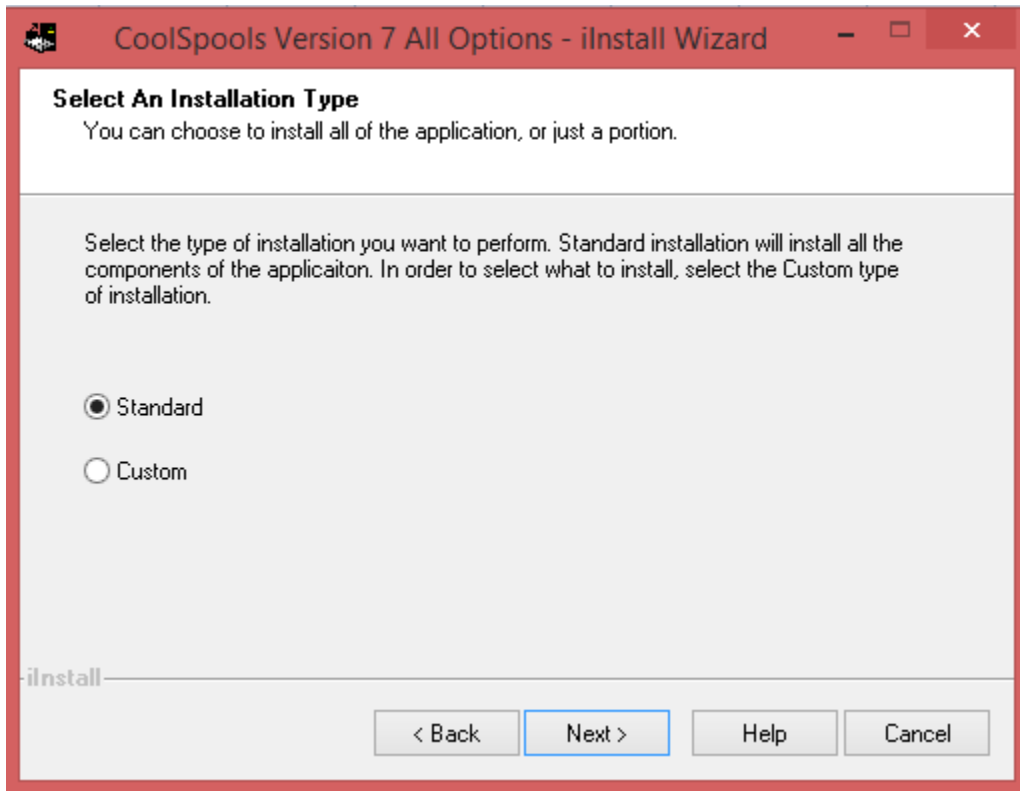
Read the text and click Next.

You are now given the opportunity to read the software license agreement that governs usage of the software.



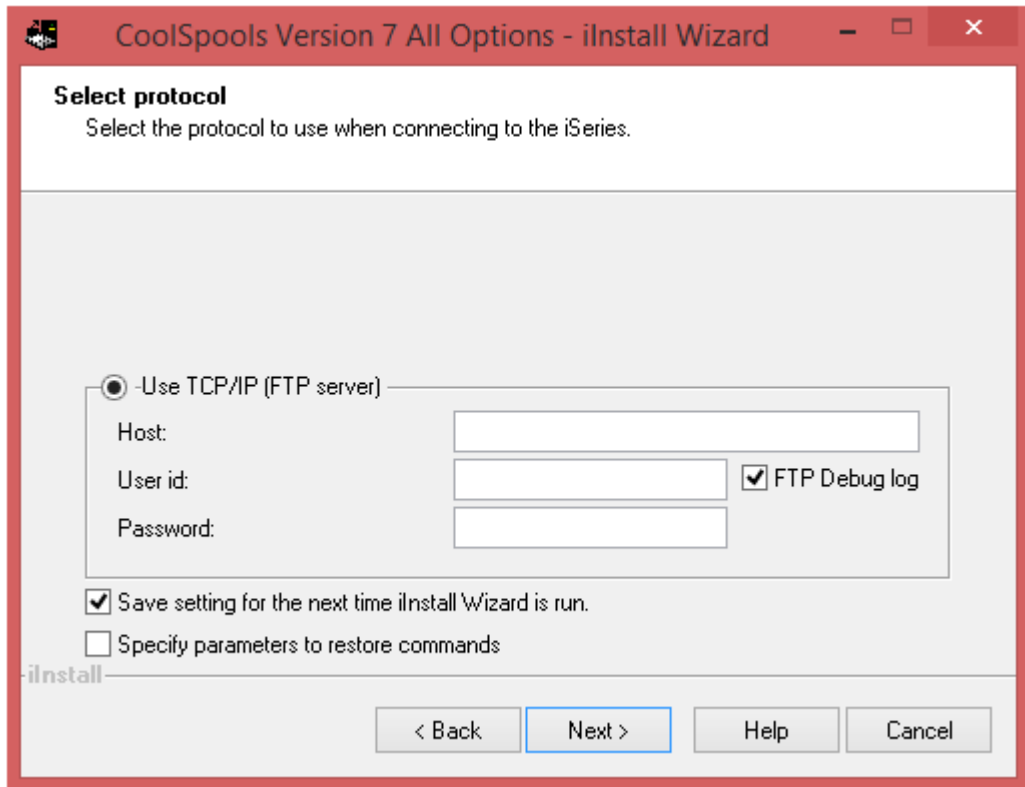
Read the text, and, if you are happy to accept it, click on the “I accept” option, then click Next.

On the next screen you are asked whether you wish to use the Standard or Custom install method.



The Custom install method is intended for use only in special circumstances and you should not select this option unless instructed to do so by ariadne support to overcome an installation problem.

Select "Standard" if not already selected, and click Next.



The only option is TCP/IP (FTP server).

In order to connect to your IBM i using FTP, the FTP server must be started on your IBM i. If this is not already running, you can start it with

STRTCPSVR SERVER(*FTP)

Fill in the following:

Host:

Specify the name or IP address of the IBM i on which you wish to install the software.

User id:

Specify the user profile with which you will sign on to the IBM i. This must be a user profile with *SECADM and *ALLOBJ special authorities, e.g. QSECOFR.

Password:

Specify the password for the user profile above.

The other fields are optional:

Save setting...

Check this box if you want the installer to remember your details for the next time you run an installation.

FTP debug log

Check this box to generate a log of the FTP commands that are executed.

Only use this option if requested to do so by ariadne support.

Specify parameters to restore commands:

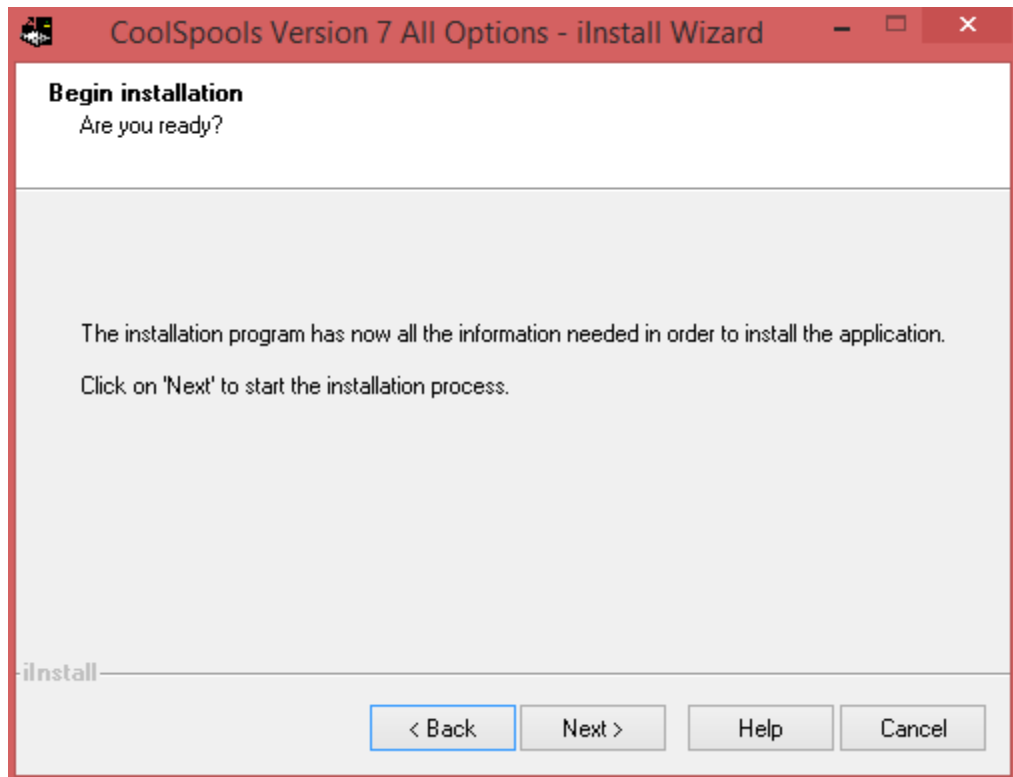
Check this box to specify additional restore parameters.

Only use this option if requested to do so by ariadne support.

Note the software can only be restored to the System ASP

Click Next.

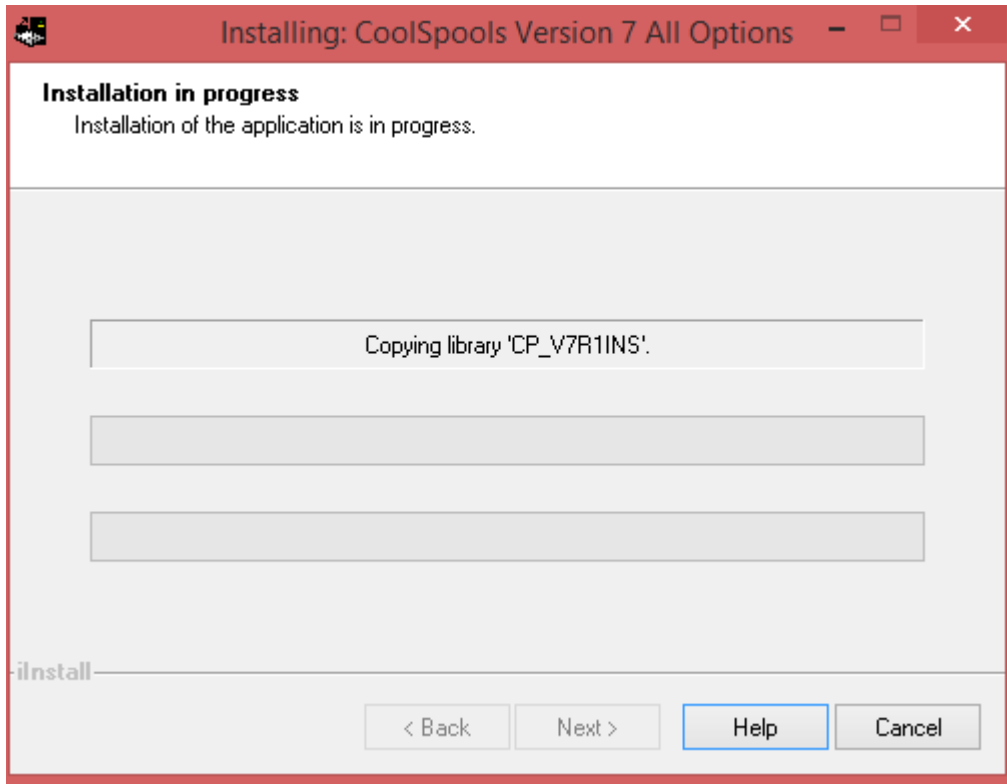
You will now be shown a screen that gives you the chance to confirm that everything is ready for the installation (for example, that you are connected to the IBM i).



Please note that the install process may take as much as 45 minutes to complete when the option to install the complete package is being run.

Click Next when ready to start.

You will see this screen or something very similar.



It is possible that at this point your PC firewall might display a message such as this indicating that the install program needs to be granted permission to communicate between your PC and the IBM i.

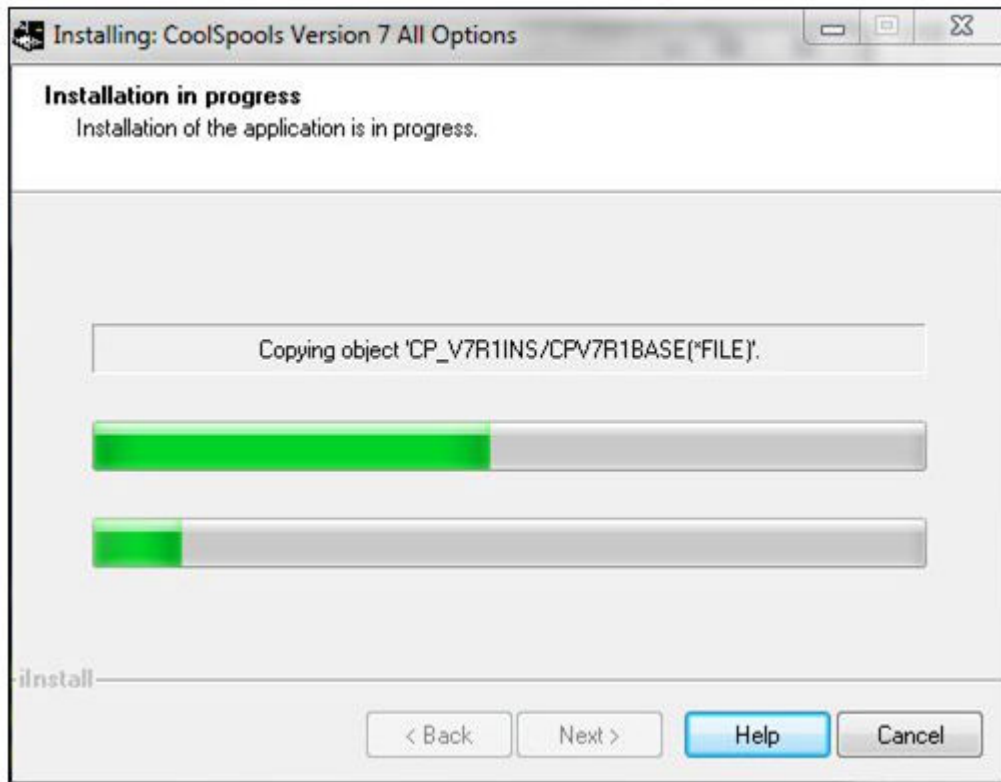


If you see a message such as this, select Unblock or whatever your firewall's equivalent option is to allow the program to communicate with the IBM i.

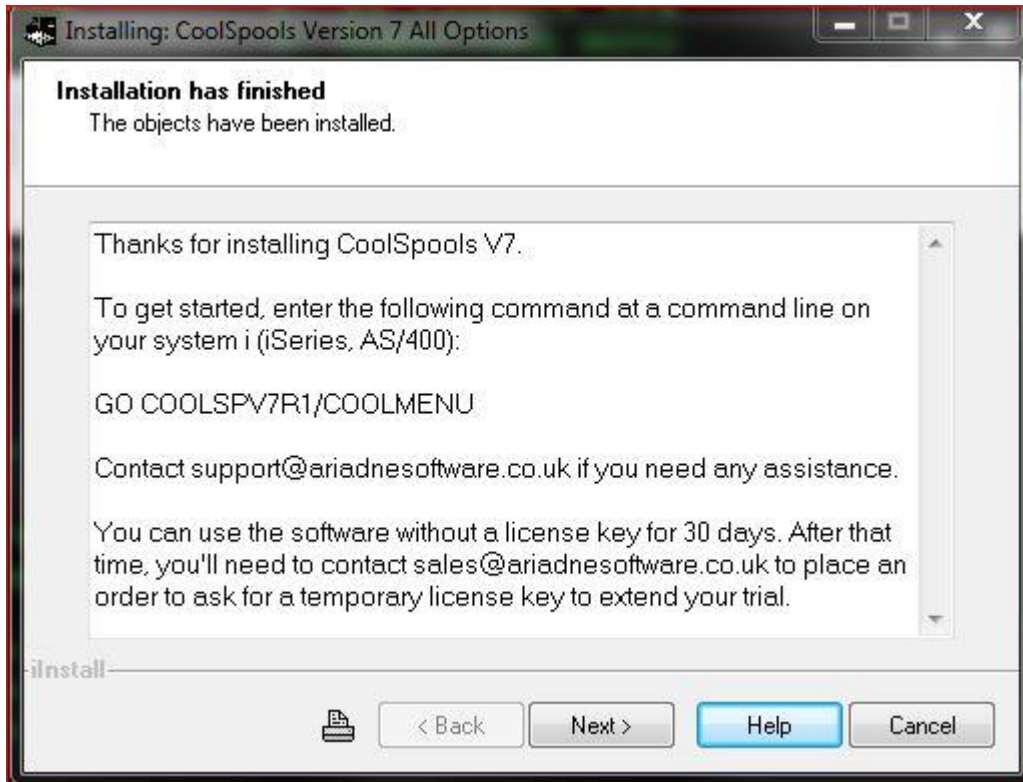
If your firewall simply blocks the link without allowing you the option to unblock it, the installer will fail. Port 20 must be open to allow the installer to communicate with the

IBM i using FTP. If it is not possible to open up the firewall, use either Install Method C or Install Method D instead.

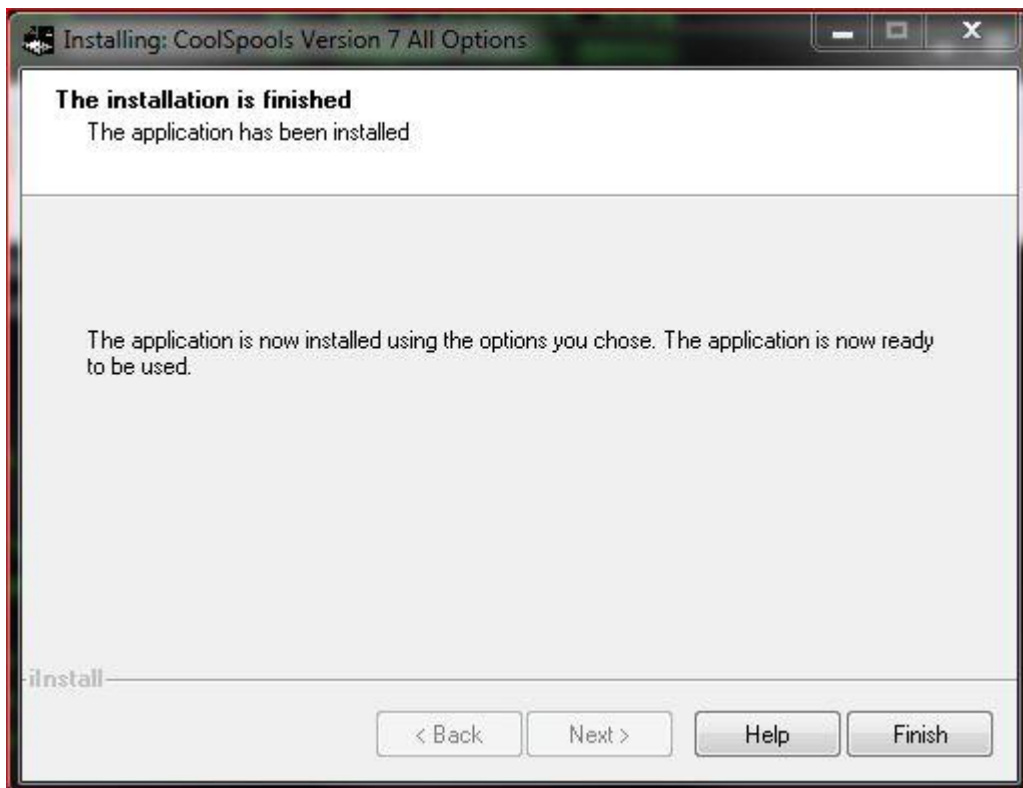
If the connection is successful, you will now see screen similar to the following while the objects are copied to your IBM i and the commands are run to carry out the installation:



When the install process completes, you will see the following screen.

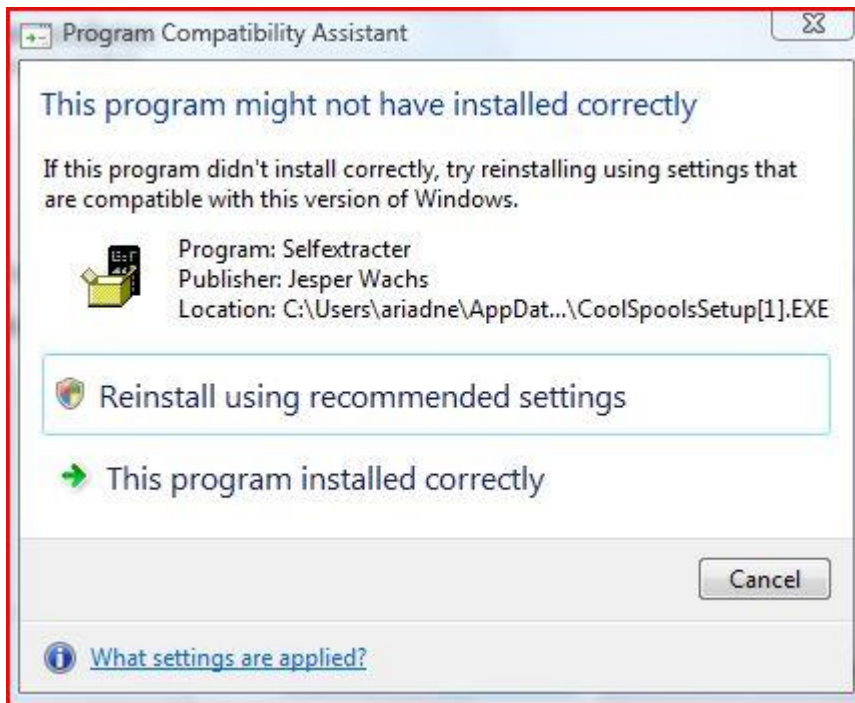


Read the instructions, then click Next to see the final screen.



Click Finish to complete the installation.

Since nothing is installed on your PC, Windows may get confused and show a screen suggesting that the install failed.



You can ignore this. Click “This program installed correctly” or equivalent.

If you ran the install program for the complete package (CoolSpools AllOptionsSetup.EXE), the entire CoolSpools package has now been installed and you can begin to use it by displaying the CoolSpools menu by running

GO COOLSPV7R1/COOLMENU

on your IBM i.

If you installed the CoolSpools Base option by running CoolSpoolsBaseSetup.EXE, you should now repeat the process for each individual product option you wish to install.

Alternatively, if you are able to install from the IBM i, you can just follow the procedure below for the base option and then use the “Install product options” option from the Base Option Menu. Display the base option menu by running:

GO COOLSPV7R1/BASEMENU

Method B

Automated install from a PC and the IBM i

Summary

This method involves running a small .EXE file (self-extracting zip) file on your PC to install just a small installer application on the IBM i. The rest of the installation, including downloading of the install files, is then carried out on the IBM i itself.

Note that CoolSpools does not need a PC and after installation all CoolSpools functionality runs entirely on the IBM i.

Select this method if you prefer to run things mostly from the IBM i.

Prerequisites

- a) You must sign on to the IBM i as a user with *SECADM and *ALLOBJ special authorities.
- b) Either an FTP (preferred) or IBM i Access connection to the IBM i from your PC.
- c) An internet connection must be available for use from the IBM i so that the installer can connect to ariadne's web server via FTP to download the install files.
- d) You must be willing and able to open up your PC firewall so the installer can communicate between your PC and the IBM i.

This method involves running a .EXE file (self-extracting zip) file on your PC to install just a small installer application on the IBM i. The rest of the installation, including downloading of the install files, is then carried out on the IBM i itself.

Downloads

In order to install CoolSpools using this method, you must first download and run the installer program CoolSpools_V7R1_Setup.EXE from All files can be downloaded from <http://www.ariadnesoftware.co.uk>

Instructions

On the PC

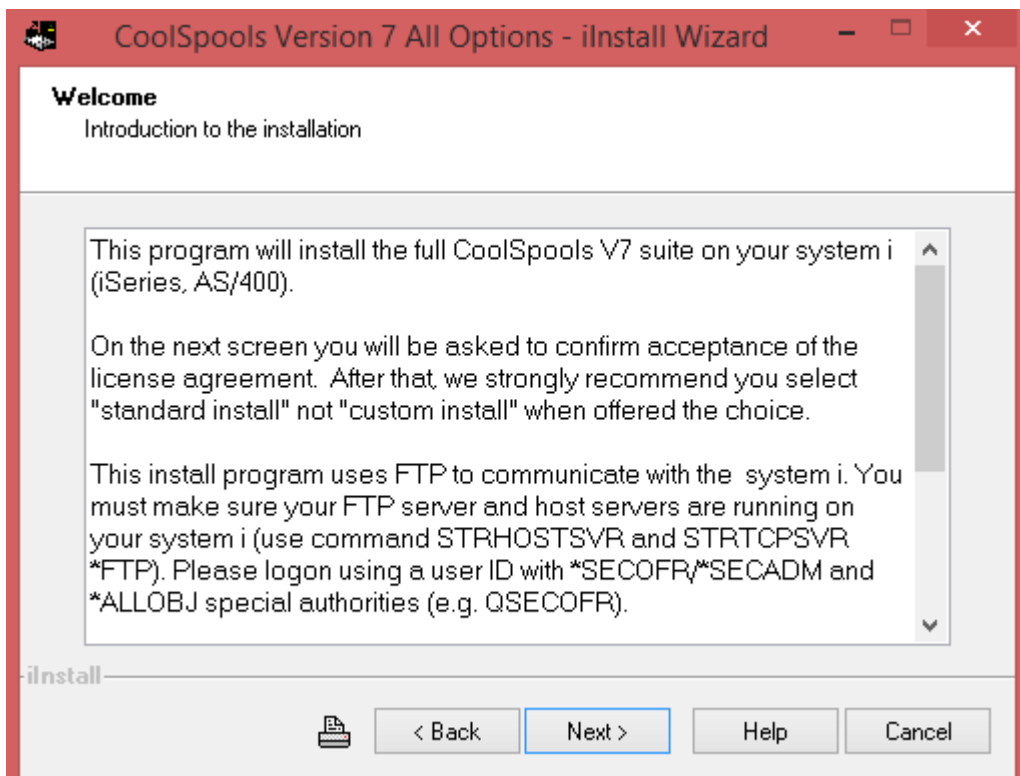
When you download the installer program CoolSpools_V7R1_Setup.EXE, you will be given the option to run it or save it to your PC. Select Run to start the install process immediately. Select Save to store the installation program on your PC. If you choose save it to your PC, to run it at a later time, locate it on your PC (using Computer, My Computer or Explorer) and double click it to start the installation process.

You will first see this welcome screen:



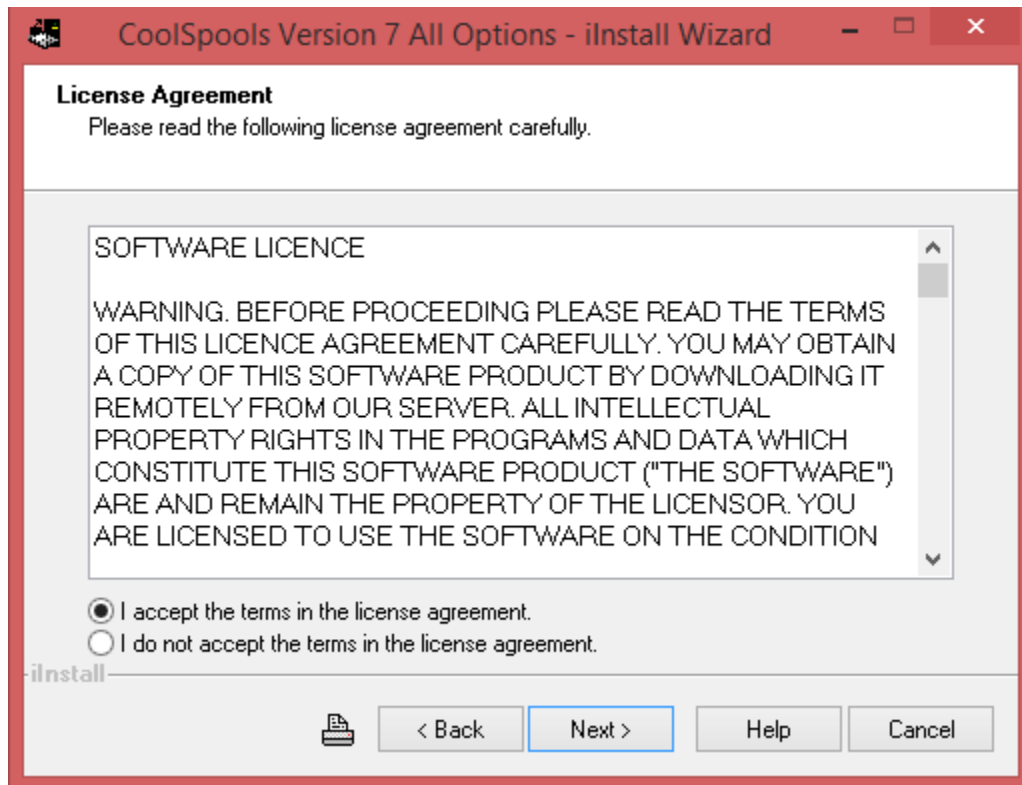
Click Next.

The following screen explains that you are installing just the Installer application and reminds you of the instructions explained below.



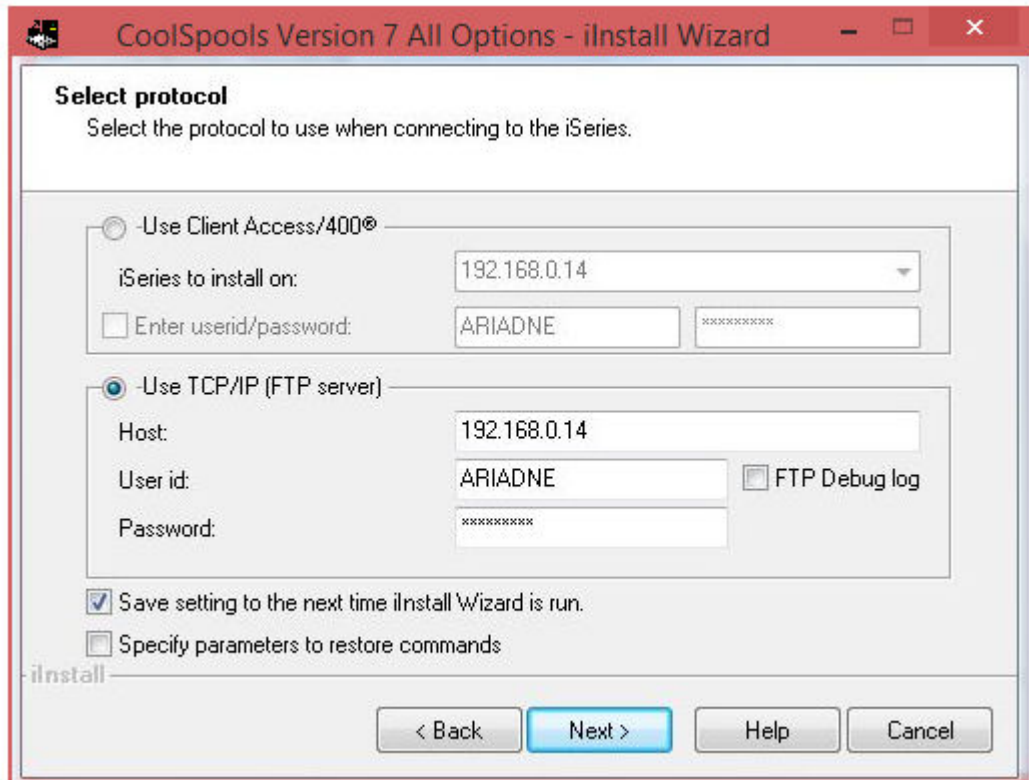
Read the text and click Next.

On the next screen you are asked whether you wish to use the Standard or Custom install method.



The Custom install method is intended for use only in special circumstances and you should not select this option unless instructed to do so by ariadne support to overcome an installation problem. Select "Standard" if not already selected, and click Next.

You are now given a choice of communications protocols. The installer will use the protocol selected to communicate with your IBM i to transfer the installation files and run the necessary commands.



The options are Client Access/400 and TCP/IP (FTP server). We strongly recommend that you select the second option **TCP/IP (FTP server)** unless instructed by ariadne support to use the other method for some reason.

In order to connect to your IBM i using FTP, the FTP server must be started on your IBM i. If this is not already running, you can start it with

STRTCPSVR SERVER(*FTP)

Fill in the following:

Host:

Specify the name or IP address of the IBM i on which you wish to install the software.

User id:

Specify the user profile with which you will sign on to the IBM i. This must be a user profile with *SECADM and *ALLOBJ special authorities, .e.g. QSECOFR.

Password:

Specify the password for the user profile above.

The other fields are optional:

Save setting...

Check this box if you want the installer to remember your details for the next time you run an installation.

FTP debug log

Check this box to generate a log of the FTP commands that are executed.

Only use this option if requested to do so by ariadne support.

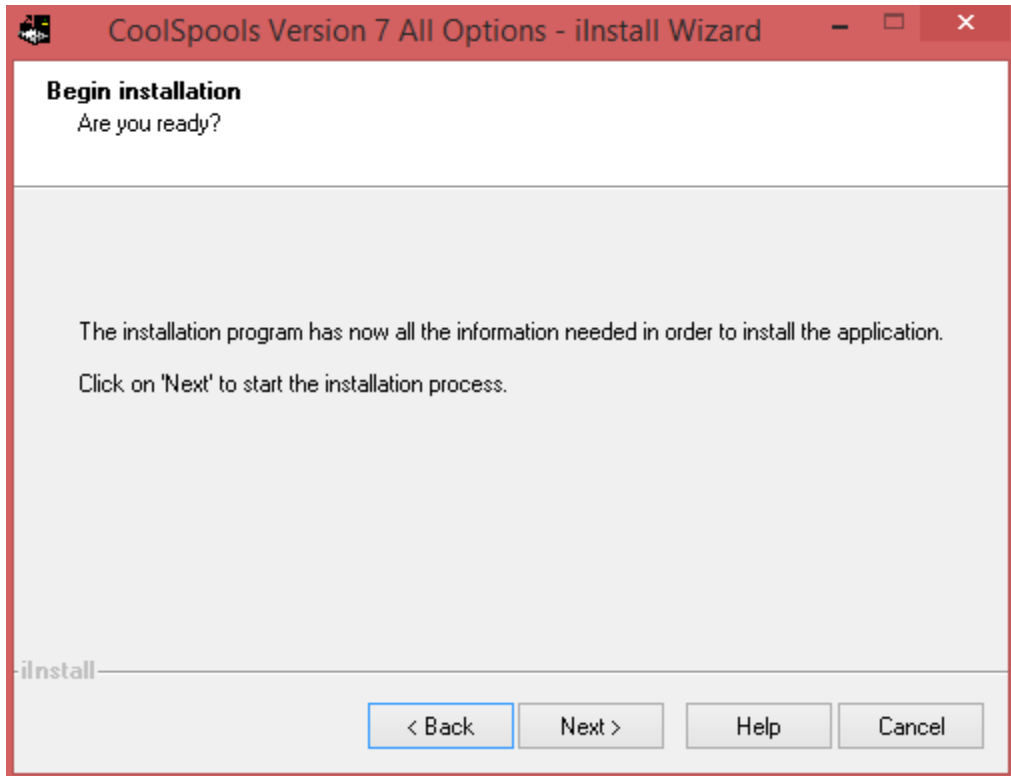
Specify parameters to restore commands:

Check this box to specify additional restore parameters.

Only use this option if requested to do so by ariadne support.

Click Next.

You will now be shown a screen that gives you the chance to confirm that everything is ready for the installation (for example, that you are connected to the IBM i).



Click Next when ready to start.

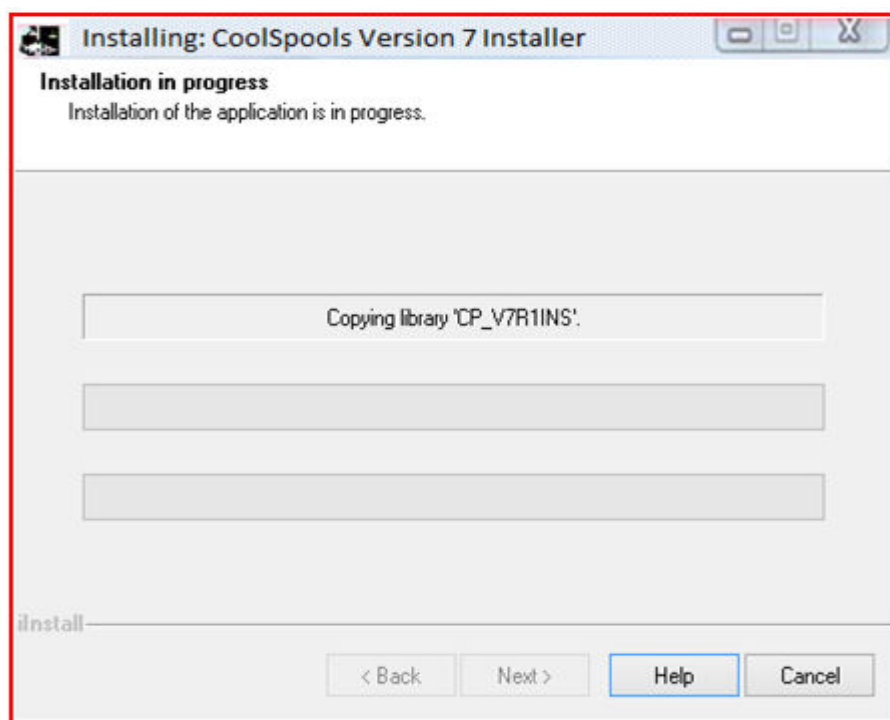
It is possible that at this point your PC firewall might display a message such as this indicating that the install program needs to be granted permission to communicate between your PC and the IBM i.



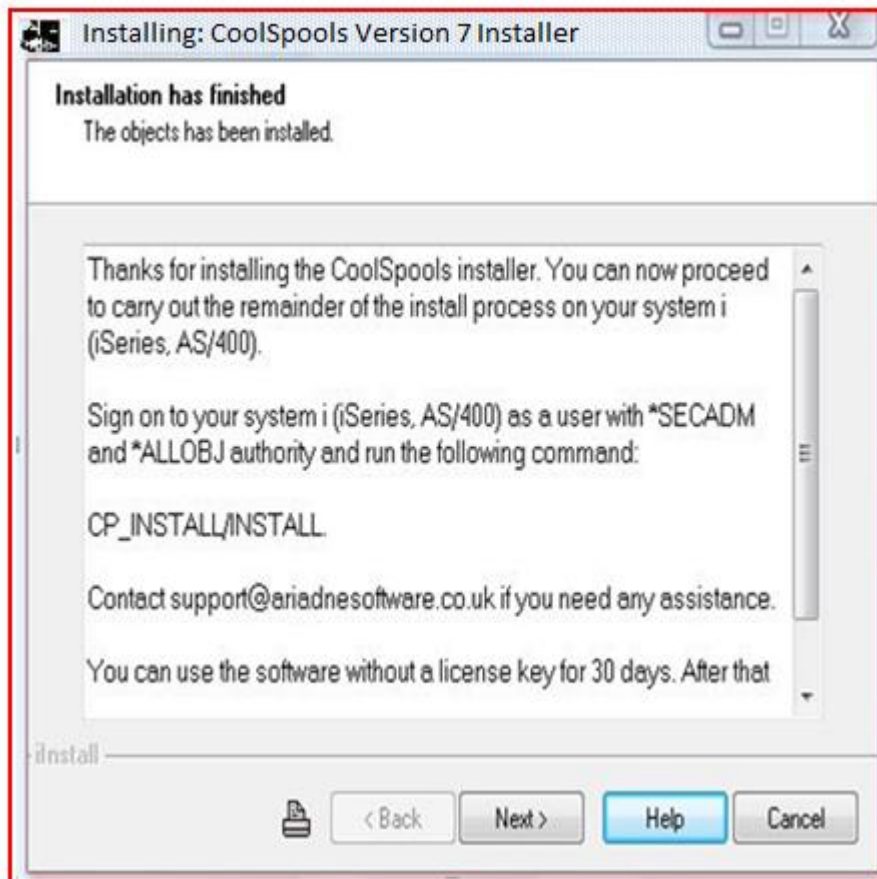
If you see a message such as this, select Unblock or whatever your firewall's equivalent option is to allow the program to communicate with the IBM i.

If your firewall simply blocks the link without allowing you the option to unblock it, the installer will fail. Port 20 must be open to allow the installer to communicate with the IBM i using FTP. If it is not possible to open up the firewall, use either Install Method C or Install Method D instead.

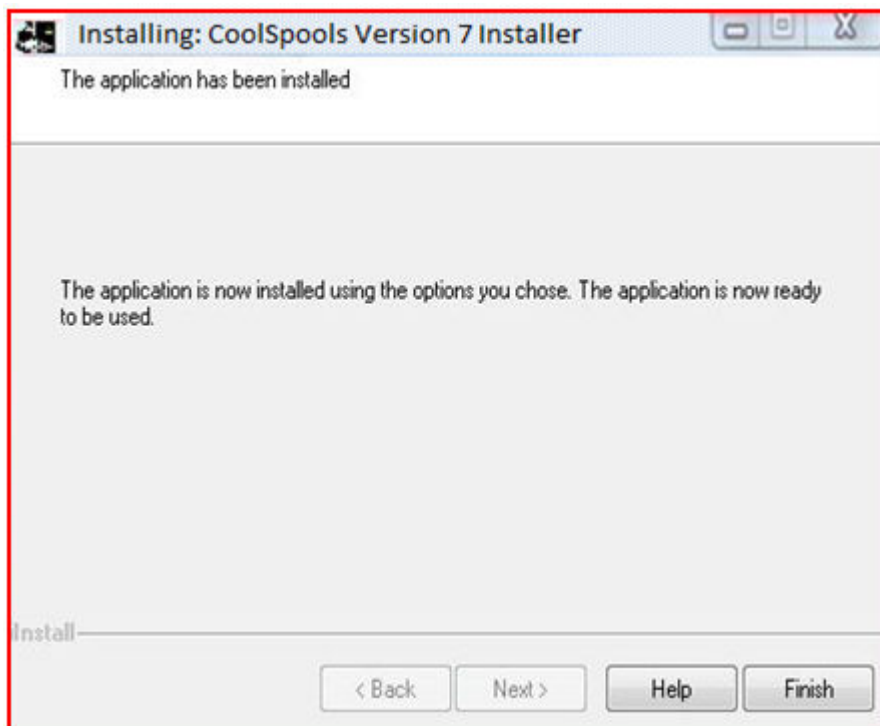
If the connection is successful, you will now see a screen similar to the following while the objects are copied to your IBM i and the commands are run to carry out the installation:



When the install process completes, you will see the following screen.

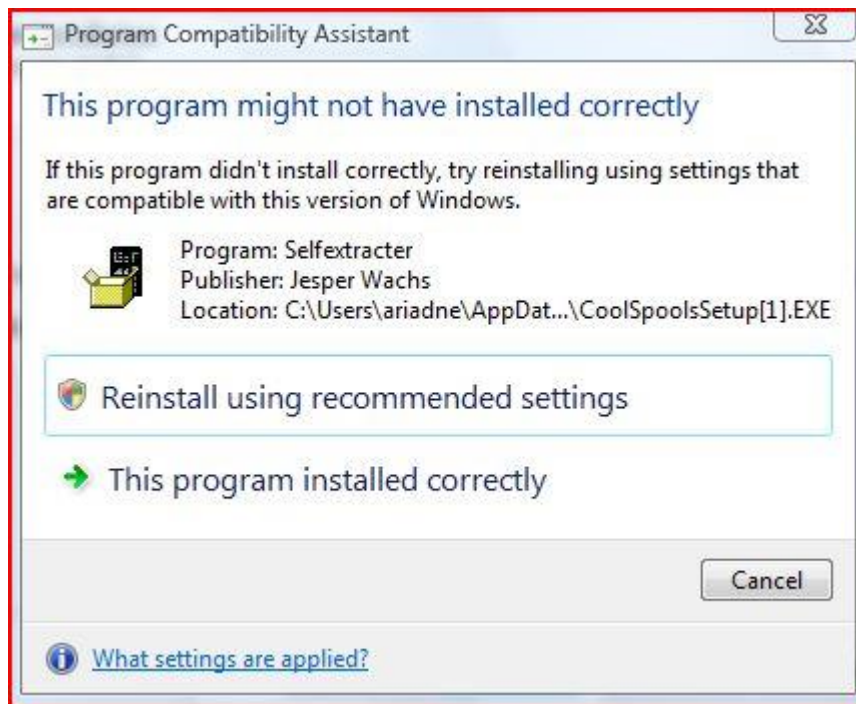


Read the instructions, then click Next to see the final screen.



Click Finish to complete the installation.

Since nothing is installed on your PC, Windows may get confused and show a screen suggesting that the install failed. You can ignore this. Click “This program installed correctly” or equivalent.



On the IBM i

Now go to your IBM i command line and type this command and press Enter.

CP_V7R1INS/INSTALL

This starts the next stage of the install process, which downloads and installs the actual CoolSpools product code on your IBM i.

N.B.

If you receive an error message about a signature violation, then you probably have a CoolSpools V5/V6 library in the system portion of your library list. DSPLIBL to view your library list. If either CVTSPLV5R1, COOLSPV5R1, or COOLSPV6R1 are shown, remove them with RMVLIBLE, EDTLIBL or CHGSYSLIBL.

You will see a screen like this:

```
-----  
CoolSpools - Install Options      Serial nbr : 65-772FF  
                                  LPAR . . . . 001  
  
Select the product options to install by enter Y=Yes or N=No below.  
  
*BASE Base option      Y      Base code and shared functions.  
  *NOTINSTALLED        Must be installed before any other options.  
  
1. Spool converter    Y      Convert spooled files to PDF, Excel, XML, HTML,  
  *NOTINSTALLED        text etc. Split spooled files. Combine PDFs.  
  
2. Email              Y      Send emails using a simple command or an API.  
  *NOTINSTALLED        Attach PDFs, Excel files or other files types.  
  
3. Spool admin        Y      Manage spooled files online or in batch. Set up  
  *NOTINSTALLED        automatic processing and distribution rules.  
  
4. Database           Y      Convert database files and save SQL and query  
  *NOTINSTALLED        output as Excel, XML, CSV, HTML or text.  
  
5. NetServer Toolkit Y      An easy and convenient way of managing NetServer  
  *NOTINSTALLED        and access PDFs etc from your PC. FREE!  
  
F3=Exit  F10=Install interactively  F12=Cancel  F19=Install in batch  
-----
```

Select the options you wish to install by entering Y=Yes or N=No against them. The base option is mandatory and cannot be deselected if it is not currently installed.

When you are ready to install, press F10 if you wish to install the software interactively, or F19 to install in batch.

If you press F19, you will be prompted with a SBMJOB command which will give you an opportunity to change the job queue or any other job parameters that might need to be modified from the defaults. The command string to be run and the current library are set automatically and cannot be modified.

The install library CP_V7R1INS can be deleted once you have finished installing.

Method C

Manual installation of the installer, automated installation from the IBM i

Summary

This method involves running a series of commands on your PC and on the IBM i to install the installer application on IBM i. The rest of the installation, including downloading of the install files, is then carried out on the IBM i itself as per Method B above.

Note that CoolSpools does not need a PC and after installation all CoolSpools functionality runs entirely on the IBM i.

Select this method if you prefer to run things mostly from the IBM i and are unable to use the CoolSpools_V7R1_Setup.EXE file to install the installer application for some reason (for example if you cannot modify your firewall to allow it to connect to the IBM i).

Prerequisites

- a) You must sign on to the IBM i as a user with *SECADM and *ALLOBJ special authorities.
- b) An internet connection must be available for use from the IBM i so that the installer can connect to ariadne's web server via FTP to download the install files.
- c) You must be able to use FTP to transfer data between your PC and the IBM i

Downloads

In order to install CoolSpools using this method, you must first download the install file for the installer application which is called CP_V7R1INS.ZIP and save it to your PC.

Instructions

The zip file called CP_V7R1INS.ZIP contains a file called CP_V7R1INS.SAV which in turn contains the installer application that needs to be installed on the IBM i. The contents of the CP_V7R1INS.SAV file must be transferred to a save file on the IBM i using FTP.

Transferring the CP_V7R1INS.SAV file using FTP

This method uses FTP (File Transfer Protocol) to transfer the CP_V7R1INS.SAV file from your PC to your IBM i. It is assumed that you have stored the CP_V7R1INS.ZIP file which you downloaded from the Internet on your PC and that you have enabled an FTP link between your PC and your IBM i.

Steps to be carried out on the PC are shown in green.

Steps to be carried out on the IBM i are shown in blue.

a)

On your PC, choose an existing directory or create a new directory for CoolSpools installation, either within Computer (My Computer, Windows Explorer), or from the DOS prompt, e.g.:

```
md c:\CoolSpools
```

b)

On your PC, use WinZip, PKZIP etc. to extract the CP_V7R1INS.SAV file from the zip file into the directory you created in (a) above.

Alternatively, open the zip file as a directory in Computer (My Computer, Windows Explorer) and copy the CP_V7R1INS.SAV file to the directory you created in (a) above..

c)

On your IBM i, create a library called CP_V7R1INS, e.g.

```
crtlib CP_V7R1INS
```

then create a save file called CP_V7R1INS in that library:

```
crtsave CP_V7R1INS/CP_V7R1INS
```

d)

On your PC, start an FTP session to your IBM i server. You may use an FTP application or simply go to the DOS prompt and type:

```
ftp AS400_name
```

where AS400_name is the name of your IBM i. You can also use the IP address rather than the system name.

You will be prompted to enter your user id and password. Please ensure that you sign on with a user id that has adequate authority. We recommend that you sign on as the Security Officer QSECOFR or another user profile with *SECADM and *ALLOBJ special authorities.

Issue the following FTP commands within the FTP session:

```
bin
```

This command instructs FTP not to carry out any data conversion.

```
quote site na 1
```

This makes sure the IBM i is using the required naming format 1 (path naming).

```
cd /QSYS.LIB/CP_V7R1INS.LIB
```

This command makes CP_V7R1INS the current library of the FTP session.

```
lcd dir_name
```

where *dir_name* is the name of the directory on your PC in which you unzipped the CP_V7R1INS.SAV file earlier.

```
put CP_V7R1INS.SAV CP_V7R1INS.FILE
```

This command transmits the contents of the file CP_V7R1INS.SAV to the save file called CP_V7R1INS which you created on your IBM i.

quit

This ends the FTP session.

Alternative: If your network firewall prevents you from opening an FTP connection to your IBM i server, but you can access the server's IFS (Integrated File System) using Windows Explorer or IBM Navigator, then extract the content of the zip file CP_V7R1INS.ZIP to a folder on your IBM i server's IFS, and populate the save file by running the command below, where *dir_name* is the name of the directory on your IFS into which the CP_V7R1INS.SAV file was unzipped.

```
CPYFRMSTMF FROMSTMF ('/dir_name/CP_V7R1INS.SAV')
           TOMBR ('/QSYS.LIB/CP_V7R1INS.LIB/CP_V7R1INS.FILE')
           MBROPT (*REPLACE) CVTDTA (*NONE)
```

e)

On your IBM i, ensure that the previous step worked by displaying the contents of save file CP_V7R1INS

```
dspsavf CP_V7R1INS/CP_V7R1INS
```

If you see the message **(No records in save file)** then something has gone wrong during the preceding steps. Try following them again. If you still cannot get this procedure to work, contact us at support@ariadnesoftware.co.uk.

f)

On your IBM i, issue the following command to restore the CoolSpools installer:

```
RSTOBJ
      OBJ (*ALL)
      SAVLIB (CP_V7R1INS)
      DEV (*SAVF)
      SAVF (CP_V7R1INS/CP_V7R1INS)
```

Now follow the instructions for running the CoolSpools installer on your IBM i as per [Method B](#) above.

The install library CP_V7R1INS can be deleted once you have finished installing.

Method D

Manual installation on the IBM i

Summary

Select this method only if it is not possible to use any of the above methods for some reason as it is more complex than the others.

You are required to download one or more zip files each containing one or more IBM i save files. Those save files must be unzipped and transferred to the IBM i. You must then run a series of Restore Licensed Program (RSTLICPGM) commands to install the product options you want.

Note that CoolSpools does not need a PC and after installation all CoolSpools functionality runs entirely on the IBM i.

Prerequisites

- a) You must sign on to the IBM i as a user with *SECADM and *ALLOBJ special authorities.
- b) You must be able to use FTP to transfer data between your PC and the IBM i

Downloads

Refer to the table below for details of the files you can download and their contents.

Zip file name	Save file(s) included	Description
COOLSPV7R1.ZIP	CPV7R1BASE.SAV CPV7R1OPT1.SAV CPV7R1OPT2.SAV CPV7R1OPT3.SAV CPV7R1OPT4.SAV CPV7R1OPT5.SAV	Save files for the base product option and each individual product option (see below for details).
CPV7R1BASE.ZIP	CPV7R1BASE.SAV	Save file containing the CoolSpools Base option.
CPV7R1OPT1.ZIP	CPV7R1OPT1.SAV	Save file containing CoolSpools product option 1 (Spool Converter).
CPV7R1OPT2.ZIP	CPV7R1OPT2.SAV	Save file containing CoolSpools product option 2 (Email).
CPV7R1OPT3.ZIP	CPV7R1OPT3.SAV	Save file containing CoolSpools product option 3 (Spooled File Administration).

CPV7R1OPT4.ZIP	CPV7R1OPT4.SAV	Save file containing CoolSpools product option 4 (Database).
CPV7R1OPT5.ZIP	CPV7R1OPT5.SAV	Save file containing CoolSpools product option 5 (NetServer Toolkit).

The Base Option must be installed first. You will therefore need either (a) COOLSPV7R1.ZIP (which contains all options) or (b) CPV7R1BASE.ZIP (which contains the base option) and the relevant product option ZIP files for the options you wish to install.

The instructions for each option are the same, but make sure you install the Base Option first.

Instructions

Repeat instructions a-f below for each product option. **Do not** repeat any step until you have completed all of the steps for a particular product option (i.e. carry out steps a-f for the base option, then d-f for option 1, then d-f for option 2 etc.)

Alternatively, if you are able to install from the IBM i, you can just follow the procedure below for the base option and then use the "Install product options" option from the Base Option Menu. Display the base option menu by running:

GO COOLSPV7R1/BASEMENU

The zip files you download contain one or more save files as shown in the table above. The contents of these files must be transferred to a save file on the IBM i using FTP.

Transferring save files using FTP

This method uses FTP (File Transfer Protocol) to transfer the save file from your PC to your IBM i. It is assumed that you have stored the zip file(s) which you downloaded from the Internet on your PC and that you have enabled an FTP link between your PC and your IBM i.

Steps to be carried out on the PC are shown in green.

Steps to be carried out on the IBM i are shown in blue.

a)

On your PC, choose an existing directory or create a new directory for CoolSpools installation, either within Computer (My Computer, Windows Explorer), or from the DOS prompt, e.g.:

```
md c:\CoolSpools
```

b)

On your PC, use WinZip, PKZIP etc. to extract the save file from the zip file into the directory you created in (a) above.

Alternatively, open the zip file as a directory in Computer (My Computer, Windows Explorer) and copy the CPV7R1 *nnnn*.SAV file(s) to the directory you created in (a) above.

c)

On your IBM i, create a library called CP_V7R1INS, e.g.

```
crtlib CP_V7R1INS
```

then create a save file called CP_V7R1INS in that library:

```
crtsave CP_V7R1INS/CP_V7R1INS
```

d)

On your PC, start an FTP session to your IBM i. You may use an FTP application or simply go to the DOS prompt and type:

```
ftp AS400_name
```

where AS400_name is the name of your IBM i. You can also use the IP address rather than the system name.

You will be prompted to enter your user id and password. Please ensure that you sign on with a user id that has adequate authority. We recommend that you sign on as the Security Officer QSECOFR or another user profile with *SECADM and *ALLOBJ special authorities.

Issue the following FTP commands within the FTP session:

```
bin
```

This command instructs FTP not to carry out any data conversion.

```
quote site na 1
```

This makes sure the IBM i is using the required naming format 1 (path naming).

```
cd /QSYS.LIB/CP_V7R1INS.LIB
```

This command makes CP_V7R1INS the current library of the FTP session.

```
lcd dir_name
```

where *dir_name* is the name of the directory on your PC in which you unzipped the save file in (b) above.

```
put save_file_name.SAV CP_V7R1INS.FILE
```

where *save_file_name.SAV* is the name of the file you unzipped in (b) above. This command transmits the contents of the file to the save file called CP_V7R1INS.

```
quit
```

This ends the FTP session.

Alternative: If your network firewall prevents you from opening an FTP connection to your IBM i server, but you can access the server's IFS (Integrated File System) using Windows Explorer or IBM Navigator, then extract the content of the zip file to a folder on your IBM i server's IFS, and populate the save file by running the command below, where *save_file_name.SAV* is the name of the file extracted from the zip file and *dir_name* is the name of the directory on your IFS into which it was unzipped.


```
CPYFRMSTMF FROMSTMF('/dir_name/save_file_name.SAV')
  TOMBR('/QSYS.LIB/CP_V7R1INS.LIB/CP_V7R1INS.FILE')
  MBROPT(*REPLACE) CVTDTA(*NONE)
```

e)

On your IBM i, ensure that the previous step worked by displaying the contents of save file CP_V7R1INS

```
dspsavf CP_V7R1INS/CP_V7R1INS
```

If you see the message (**No records in save file**) then something has gone wrong during the preceding steps. Try following them again. If you still cannot get this procedure to work, contact us at support@ariadnesoftware.co.uk.

f)

On your IBM i, issue the following command to restore the licensed program option:

```
rstlicpgm      licpgm(7COOLSP)
               dev(*savf)
               option(option_number)
               rstobj(*all)
               lng(*primary)
               output(*none)
               rls(*first)
               replacerls(*only)
               savf(CP_V7R1INS/CP_V7R1INS)
```

where **option_number** is *BASE for the base option or 1, 2, 3, 4 or 5 for product options 1-5.

You will be asked to confirm your acceptance of the license agreement by pressing F14 after you have had an opportunity to review its contents on-screen.